



Competence in
Communication
Technologies

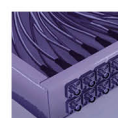
Measurement key figures

Link margin (LKM)

The link margin (LKM) indicates which reserve is still in the reception quality. The LKM value is calculated from the measured RF values. It is a modulation-independent value that summarizes the RF quality of a digital signal in a number in dB.

The link margin indicates by how many dB the signal may deteriorate until error-free reception is no longer possible.

	Link margin (LKM in dB)
Must	> 0
Should	> 5
Ideal	> 10



AXING AG
Gewerbehaus Moskau
Telefon +41 52 - 742 83 00
Telefax +41 52 - 742 83 19

CH-8262 Ramsen
info@axing.com
www.axing.com