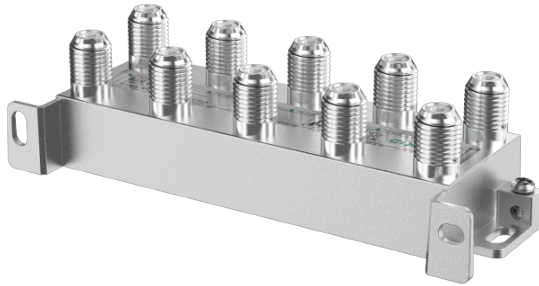


BAB 8-03X 8-way tap | 13 ... 20 dB | 5 ... 1800 MHz | housing design 03



- ✓ Suitable for DOCSIS 3.1 and 4.0
- ✓ Class A (+10 dB) according to EN 50083-2
- ✓ Inputs and outputs hum-suppressed
- ✓ High intermodulation suppression
- ✓ High return loss and isolation

Order information

Type	BAB 8-03X
Order no.	BAB00803X
GTIN	7611682009637
PE	1
VE	1
EU customs tariff number	85291080



Technical data

Frequency range	5 ... 1800 MHz
Screening factor acc. to EN 50083-2	Class A + 10 dB
Surge Protection	1 kV @ 1.2/50 µs surge voltage according to IEC 61000-4-5 / 160 Vdc impulse and UM TS 41
Intermodulation ratio (EN 60728-4)	< -115 dBc @ 120 dBµV
Taps	8-fach
Through loss	8.0 dB
Tap loss	
Tap 1	13.0 ±0.3 dB @ 10 MHz 12.9 ±0.2 dB @ 65 MHz 12.9 ±0.2 dB @ 108 MHz 13.0 ±0.3 dB @ 204 MHz 13.0 ±0.3 dB @ 258 MHz 13.4 ±0.4 dB @ 470 MHz 13.9 ±0.3 dB @ 862 MHz 14.0 ±0.3 dB @ 1218 MHz 14.1 ±0.5 dB @ 1794 MHz
Tap 3	15.5 ±0.3 dB @ 10 MHz 14.9 ±0.2 dB @ 65 MHz 14.8 ±0.2 dB @ 108 MHz 14.9 ±0.3 dB @ 204 MHz 15.1 ±0.3 dB @ 258 MHz 15.4 ±0.4 dB @ 470 MHz 16.0 ±0.5 dB @ 862 MHz 15.9 ±0.6 dB @ 1218 MHz 15.7 ±0.8 dB @ 1794 MHz
Tap 4	16.3 ±0.3 dB @ 10 MHz 15.9 ±0.2 dB @ 65 MHz 15.7 ±0.2 dB @ 108 MHz 16.0 ±0.3 dB @ 204 MHz 16.0 ±0.3 dB @ 258 MHz 16.3 ±0.4 dB @ 470 MHz 16.9 ±0.5 dB @ 862 MHz 16.4 ±0.6 dB @ 1218 MHz 16.5 ±0.8 dB @ 1794 MHz
Tap 5	19.0 ±0.3 dB @ 10 MHz 17.0 ±0.2 dB @ 65 MHz 16.8 ±0.2 dB @ 108 MHz 16.8 ±0.3 dB @ 204 MHz 16.8 ±0.3 dB @ 258 MHz 17.0 ±0.4 dB @ 470 MHz 17.3 ±0.5 dB @ 862 MHz 17.8 ±0.6 dB @ 1218 MHz 18.0 ±0.7 dB @ 1794 MHz
Tap 6	20.0 ±0.3 dB @ 10 MHz 18.0 ±0.2 dB @ 65 MHz 17.7 ±0.2 dB @ 108 MHz 17.5 ±0.3 dB @ 204 MHz 17.5 ±0.3 dB @ 258 MHz 18.7 ±0.4 dB @ 470 MHz 18.0 ±0.5 dB @ 862 MHz 18.0 ±0.6 dB @ 1218 MHz 18.7 ±0.7 dB @ 1794 MHz
Tap 7	21.0 ±0.5 dB @ 10 MHz 19.2 ±0.5 dB @ 65 MHz 18.9 ±0.5 dB @ 108 MHz 18.7 ±0.5 dB @ 204 MHz 18.5 ±0.5 dB @ 258 MHz 18.7 ±0.5 dB @ 470 MHz 19.1 ±0.5 dB @ 862 MHz 19.5 ±0.8 dB @ 1218 MHz 20.0 ±0.5 dB @ 1794 MHz

Tap 8	22.0 ±0.5 dB @ 10 MHz 20.1 ±0.5 dB @ 65 MHz 19.9 ±0.5 dB @ 108 MHz 19.8 ±0.5 dB @ 204 MHz 19.6 ±0.5 dB @ 258 MHz 19.8 ±0.5 dB @ 470 MHz 20.2 ±0.5 dB @ 862 MHz 2060 ±0.8 dB @ 1218 MHz 21.3 ±1.0 dB @ 1794 MHz
RF connectors	
Type	F-Buchse (IEC 61169-24)
Isolation	
Tap-Out	> 31 dB @ 10 ... 204 MHz > 32 dB @ 204 ... 862 MHz > 32 dB @ 862 ... 1218 MHz > 30 dB @ 1218 ... 1794 MHz
Tap-Tap	> 35 dB @ 10 ... 204 MHz > 35 dB @ 204 ... 862 MHz > 35 dB @ 862 ... 1218 MHz > 30 dB @ 1218 ... 1794 MHz
Connectors	
Connector type	F female (IEC 61169-24)
Impedance	75 Ohm
Return loss	> 20 dB @ 10 ... 204 MHz > 19 dB @ 204 ... 862 MHz > 17 dB @ 862 ... 1218 MHz > 16 dB @ 1218 ... 1794 MHz
General	
Operating temperature range	-15 °C ... +60 °C
Dimensions (W × H × D) appr.	117 × 42 × 28 mm
IP code	IP67