



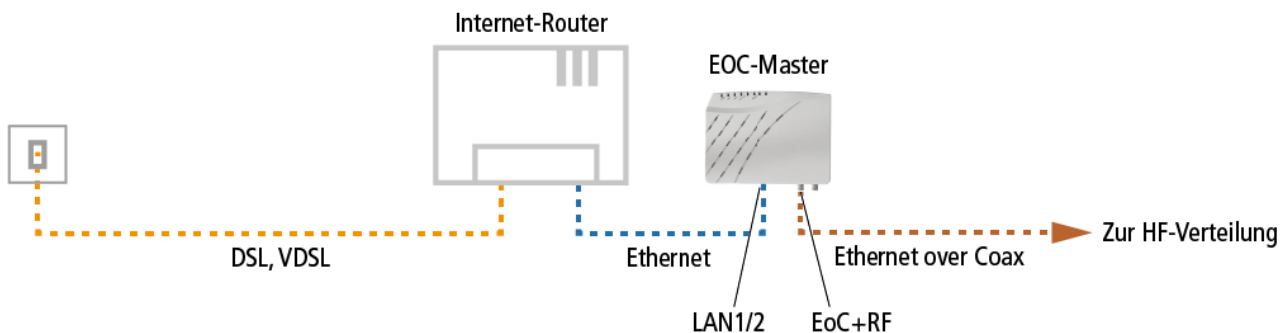
# Connection to the Internet

## AXING Application Note

An EoC system is usually connected to the Internet to provide Internet access at multiple antenna sockets. This application note describes the connection to the Internet for a master endpoint system and a peer-to-peer system.

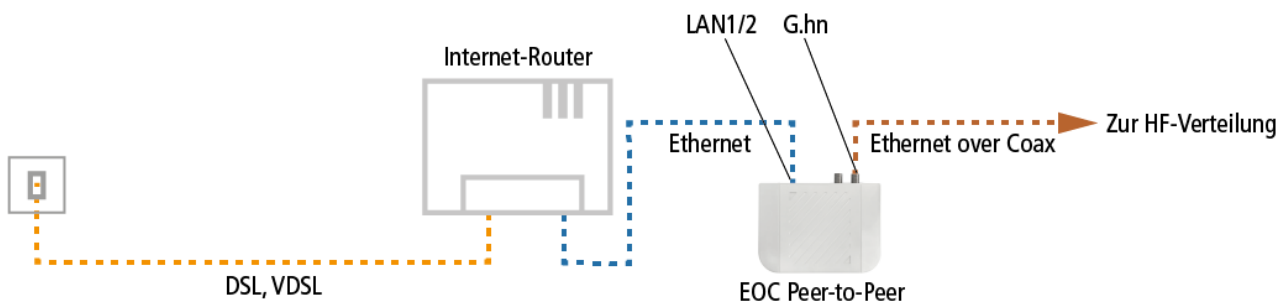
### EoC master endpoint system

In a master endpoint system, it is always the EOC master that is connected to the Internet. This modulates the data and forwards it to the RF distribution. In the example, the connection to the Internet is established with the help of the Internet router via DSL or VDSL. The EOC master is connected to the Internet router via an Ethernet cable at the LAN1 or LAN2 connection. The EoC+RF connection of the EOC is connected to the RF distribution using a coaxial cable with F connectors.



### EoC peer-to-peer system

In a peer-to-peer system, one of the EOC modems is connected to the Internet. Usually, the modem closest to the Internet connection is used for this purpose.



The connection to the Internet is established in the example with the help of the Internet router via DSL or VDSL. The EOC modem is connected to the Internet router via an Ethernet cable at the LAN1 or LAN2 port. The G.hn port of the EOC is connected to the RF distribution using a coaxial cable with F connectors.

### Other internet sources

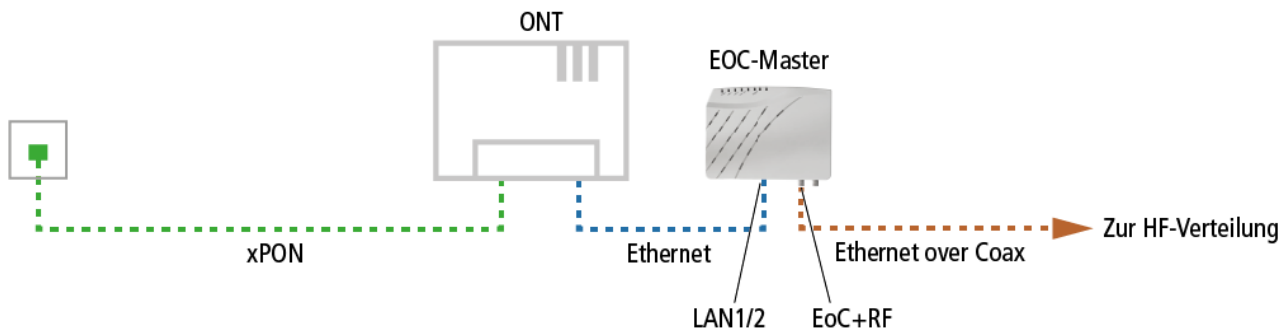


AXING AG  
Gewerbehaus Moskau  
Telefon +41 52 - 742 83 00  
Telefax +41 52 - 742 83 19

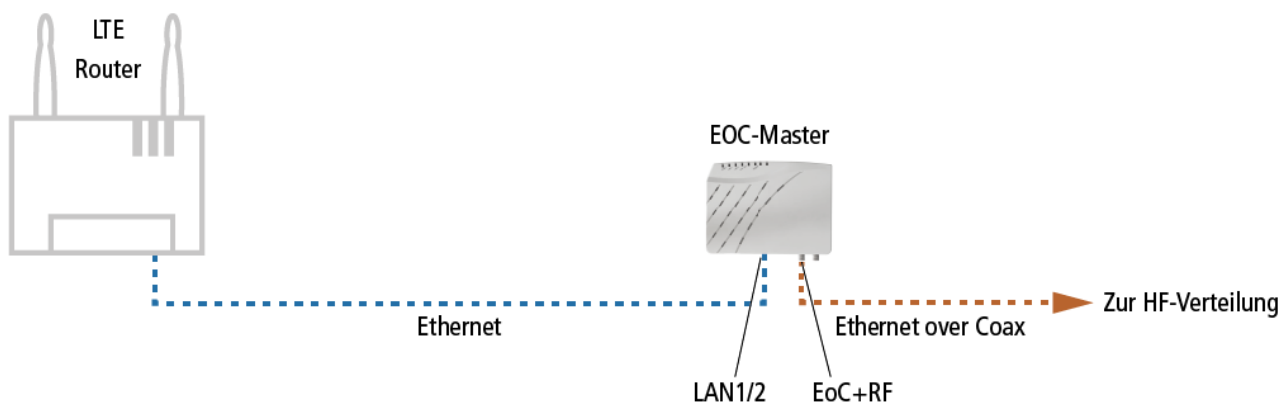
CH-8262 Ramsen  
info@axing.com  
www.axing.com



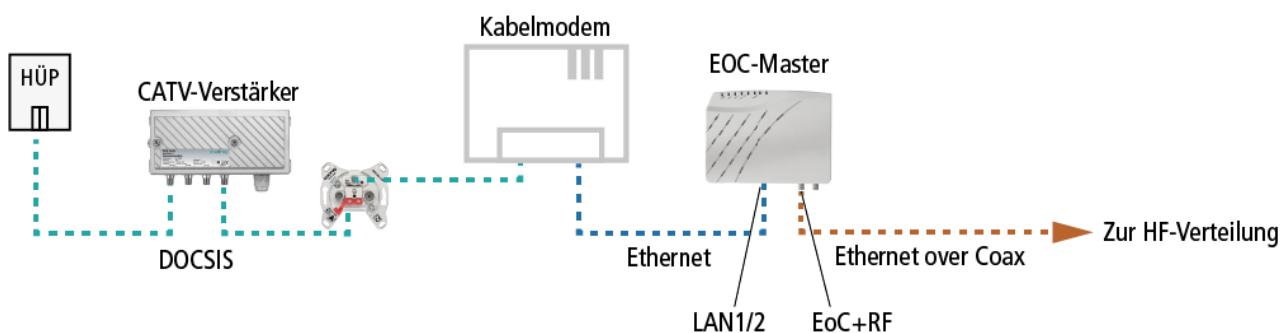
Other connection types can also be used as "Internet sources", for example xPON, LTE or DOCSIS.



The connection to the Internet is established via optical fibre with the help of the ONT. The EOC is connected to the ONT (Optical Network Termination) via an Ethernet cable.



The connection to the Internet is established via cellular networks with the help of the LTE router. The EOC is connected to the LTE router via an Ethernet cable.

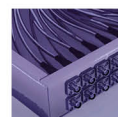




Competence in  
Communication  
Technologies

Das EOC wird über ein Ethernet-Kabel mit dem Kabelmodem verbunden. Die Verbindung zum Internet wird mit Hilfe des Kabelmodems hergestellt.

[Article as PDF](#)



AXING AG  
Gewerbehaus Moskau  
Telefon +41 52 - 742 83 00  
Telefax +41 52 - 742 83 19

CH-8262 Ramsen  
[info@axing.com](mailto:info@axing.com)  
[www.axing.com](http://www.axing.com)

Technische Verbesserungen, Änderungen im Design, Druckfehler und Irrtümer vorbehalten. | Technical improvements, changes in design, printing- and other errors reserved.